

Understanding the Early Years

The South Eastman Experience

A pilot project – 10 years later

Early Development Imperative Conference
Winnipeg, Manitoba
November 17, 2009



To share our story....

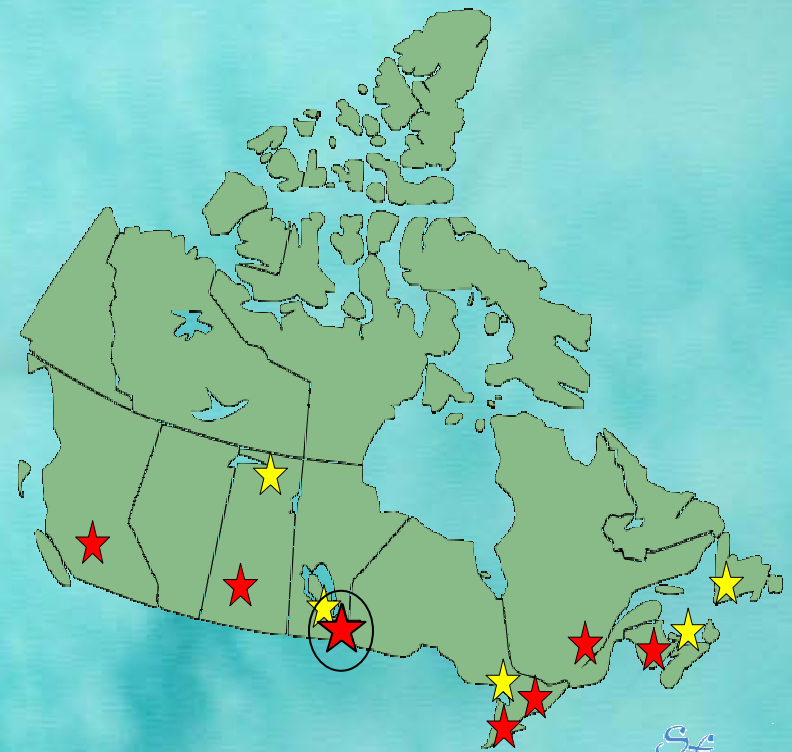


*our experience as a UEY pilot site
& how this legacy has continued*



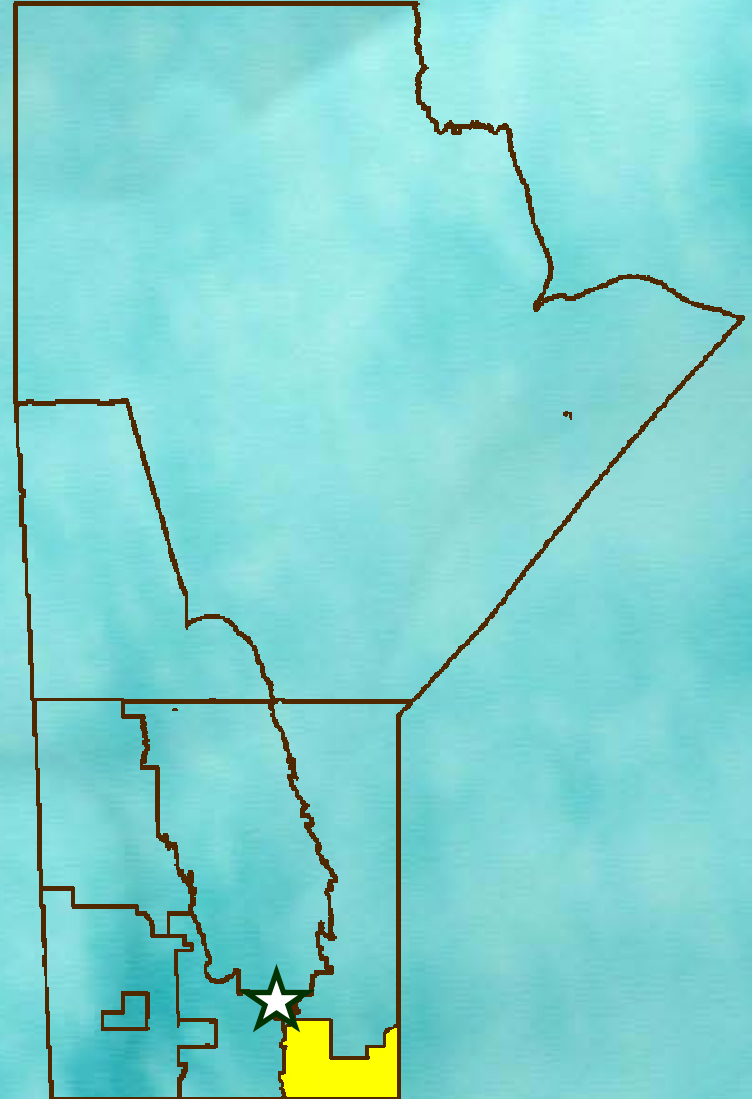
OUR KEY JOURNEY....

- * pilot II site
- * December 2000 – July 2007
- * 1st site sponsored by health authority
- * 2nd site in Manitoba



SOUTH EASTMAN RHA

- * south eastern MB
- * mid-size rural region
- * 10,000 km²
- * adjacent to Winnipeg
- * borders ON & USA



ABOUT US....



965,000 residents

ABOUT US....

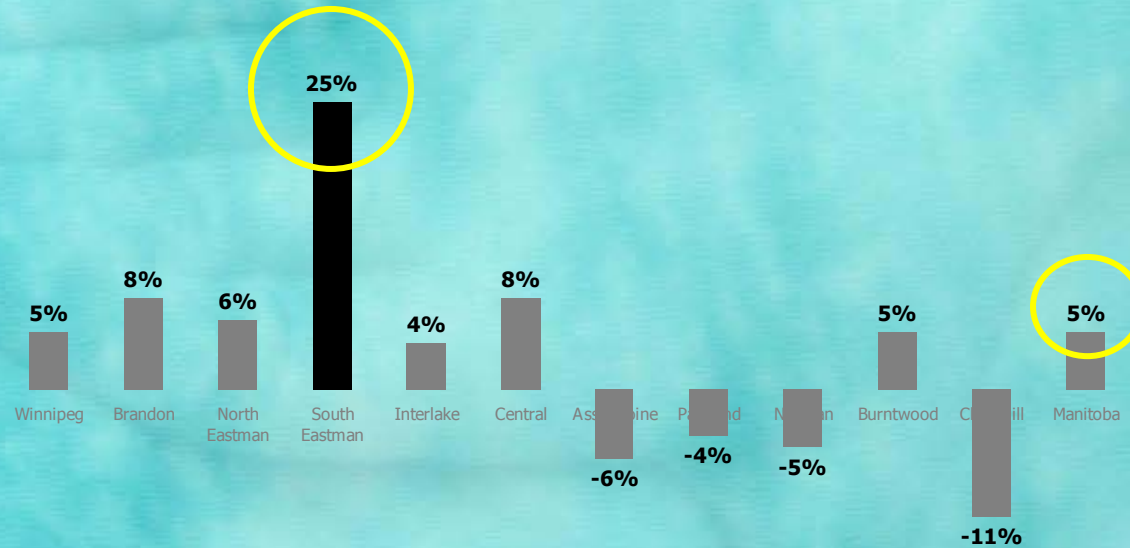


city of Steinbach centre of
business & government

ABOUT US....



Population change 1998-2008



fastest growing region in Manitoba

ABOUT US....



recent immigration key driver
of population growth

ABOUT US....



40 countries of origin
25 languages

ABOUT US....



income
below MB



education
below Wpg

Socioeconomic levels modest

OUR COALITION...part I

South Eastman Inter-agency Committee

- * 1993 - local service providers
- * to promote & implement a collaborative approach to children's issues.
- * represented a wide range of sectors responsible for the health & welfare of children
- * strong commitment but no funding
- * UEY steering committee was formed



OUR COALITION...part II

South Eastman Early Years Regional Team

- * A parent/child coalition established by Healthy Child Manitoba

- ✓ TIMING
- ✓ MANDATE
- ✓ GEOGRAPHY
- ✓ FUNDING



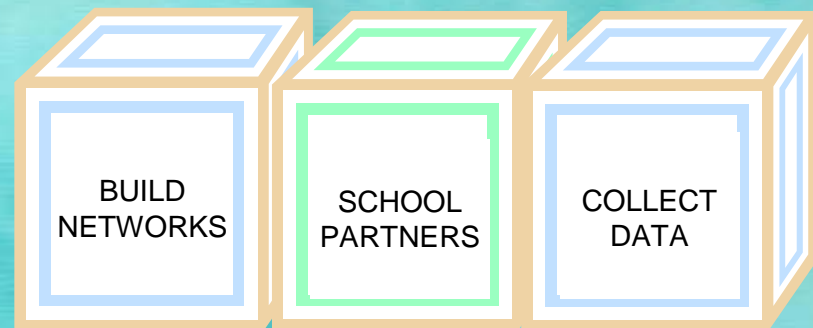
OUR SCHOOLS....

- * 5 school divisions
- * 34 elementary schools
- * 840 kindergarten students
- * most boundaries fall outside region
- * teacher training is done each year
 - for entire school divisions



EVOLUTION OF UEY...1

- * initially only 1 year project
- * understanding, interpreting and sharing the data in meaningful ways took time and required partnership development



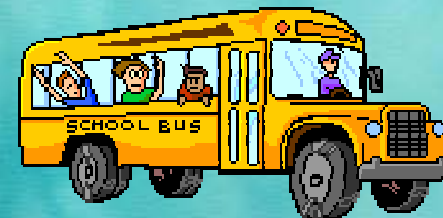
WORKING WITH EDI....

- * one piece of the puzzle
- * we developed both..

EDI report template

EDI powerpoint template

- * Additional analysis was done to compare means



population level

school level

**community
partners**

**school
partners**

Municipal x 13

School x 34

Regional x 1

Division x 5

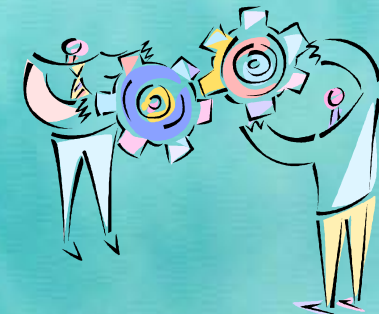
Provincial x 1

“gold” normative sample



WORKING WITH EDI....

Data collection & interpretation
can not happen in a vacuum



EVOLUTION OF UEY...2

- * EDI provincially conducted
- * Shifted focus to broader community understanding about our findings
- * Put pieces together on South Eastman children



KEY FINDINGS...

Children of South Eastman live in high-quality, safe communities with high levels of social support

Majority of parents:

- * considered communities clean and safe, good schools and child care options
- * felt neighbors supported each other
- * positive, consistent and effective parenting practices
- * engaged with children at home



KEY FINDINGS...

Children of South Eastman live in high-quality, safe communities with high levels of social support

Significant findings:

- * 83% lived in two-parent findings
- * 90% had one or more siblings
- * majority children in very good - excellent health
- * physical health and social skills – above average
- * good overall cognitive development

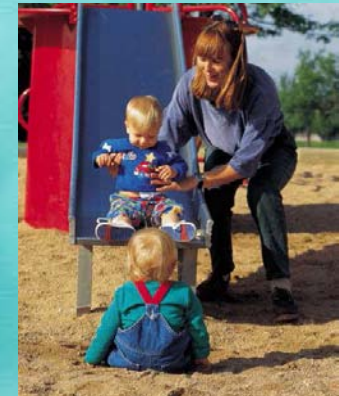


KEY FINDINGS...

Beyond overall success of South Eastman children, there is some room for improvement

Majority of parents:

- * lack of community resources for families greatest challenge
- * access to educational, cultural and recreational resources
 - progress has been made since UEY began
 - more programming and sharing of resources



KEY FINDINGS...

Beyond overall success of South Eastman children, there is some room for improvement

Significant findings:

- * lower SES dispersed across region with few pockets of affluent communities
- * lower scores on measures of language development
 - below national levels
 - 28% population “delayed” in vocabulary development



LOLA

Little Ones Learning @ Arborgate



- * expanded parent/child preschool literacy program
- * added more sessions & flexible hours to meet the needs of community
- * UEY evidence used to bring on board local government & business

COMMUNITY LITERACY WORKSHOPS



- * to address delayed language development
- * hosted workshop & developed community literacy network
- * science of early brain development

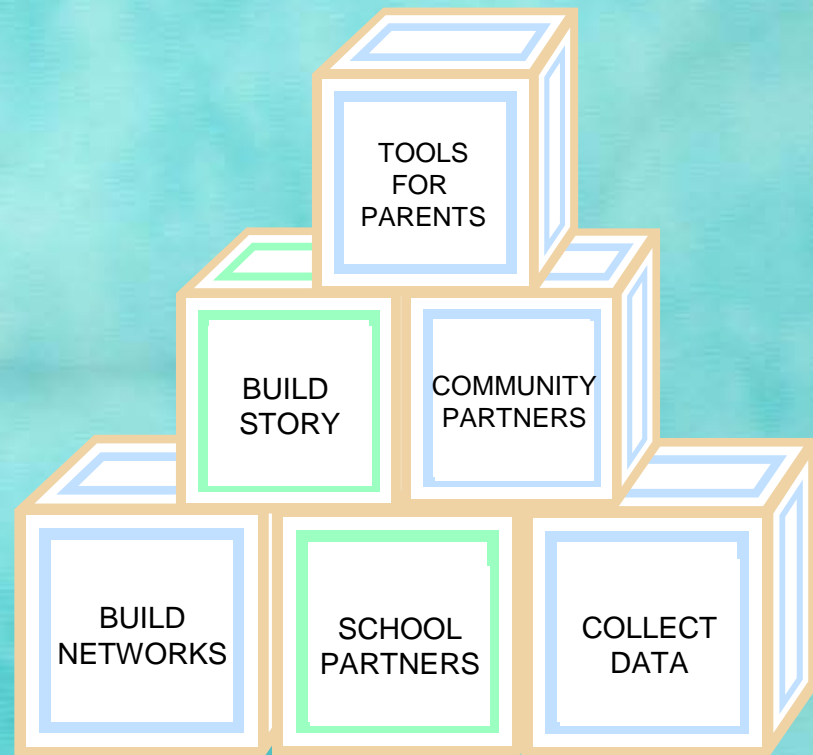
PARENT-CHILD RESOURCE ROOMS



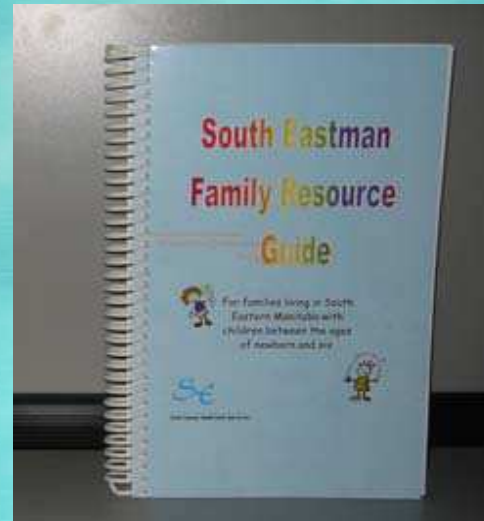
- * drop-in programs to provide support to parents with preschool children
- * established in two communities
- * UEY findings were helpful in determining which communities to place rooms

EVOLUTION OF UEY...3

- * to ensure that the research had a lasting impact on our region

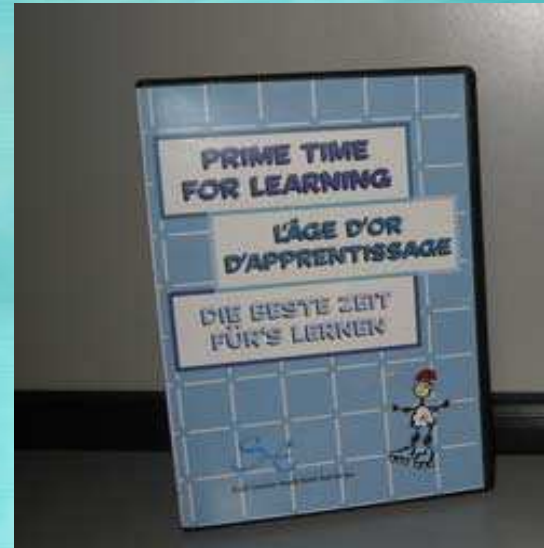


FAMILY RESOURCE GUIDE



- * demonstrated that data is useful for more than one purpose
- * bilingual
- * listed 600 programs & services
- * 5 editions = 10,000 distributed
- * parents and service providers loved it!

PRIME TIME FOR LEARNING DVD



- * resource tool designed to empower parents with young children
- * translated into three languages (English + French + German)
- * parents of newborns
- * *Families First* home visitors across Manitoba
- * UEY communities across Canada

“BABY STEPS” & “LITTLE LEARNER” BAGS



- * Distribution method for resource tools**
- * EYRT parent/child coalition**
- * “Baby steps” – 900 each year**
- * “Little Learner” – 800 each year**

– 10 years later...

- ✓ EDI continues
- ✓ Parent/Child coalitions will continue
- ✓ General literacy awareness will continue with the South Eastman Community Literacy Network
- ✓ Programs initiated and expanded in response to UEY findings will continue to develop – eg LOLA
- ✓ UEY findings integrated into Community Health Assessment Process



The moral of our story...

- * Research takes time & patience
- * Sharing results produced trust
- * We achieved understanding & expertise about our own early childhood population
- * A plan that works for us



The moral of our story...

- * the whole impact of working together adds up to more than the sum of the various contributions



For more information...

Ales Morga

amorga@sehealth.mb.ca

