



## From Data to Action in Manitoba

The  is a partnership among:

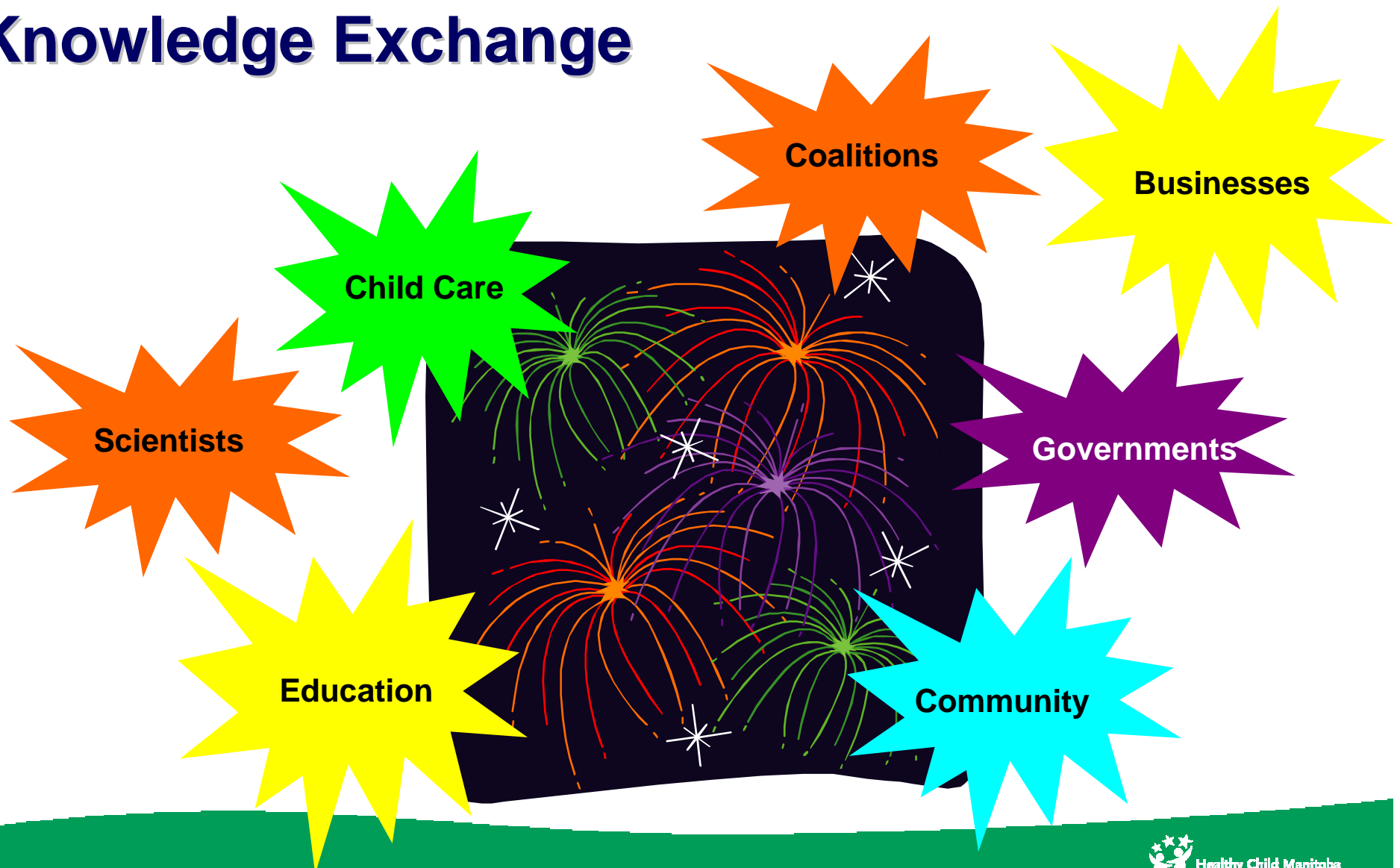
- Healthy Child Manitoba Office
- Manitoba's 37 School Divisions
- Manitoba Education
- Manitoba's 26 Parent-Child Coalitions
- Offord Centre for Child Studies, McMaster

# Are We Ready?

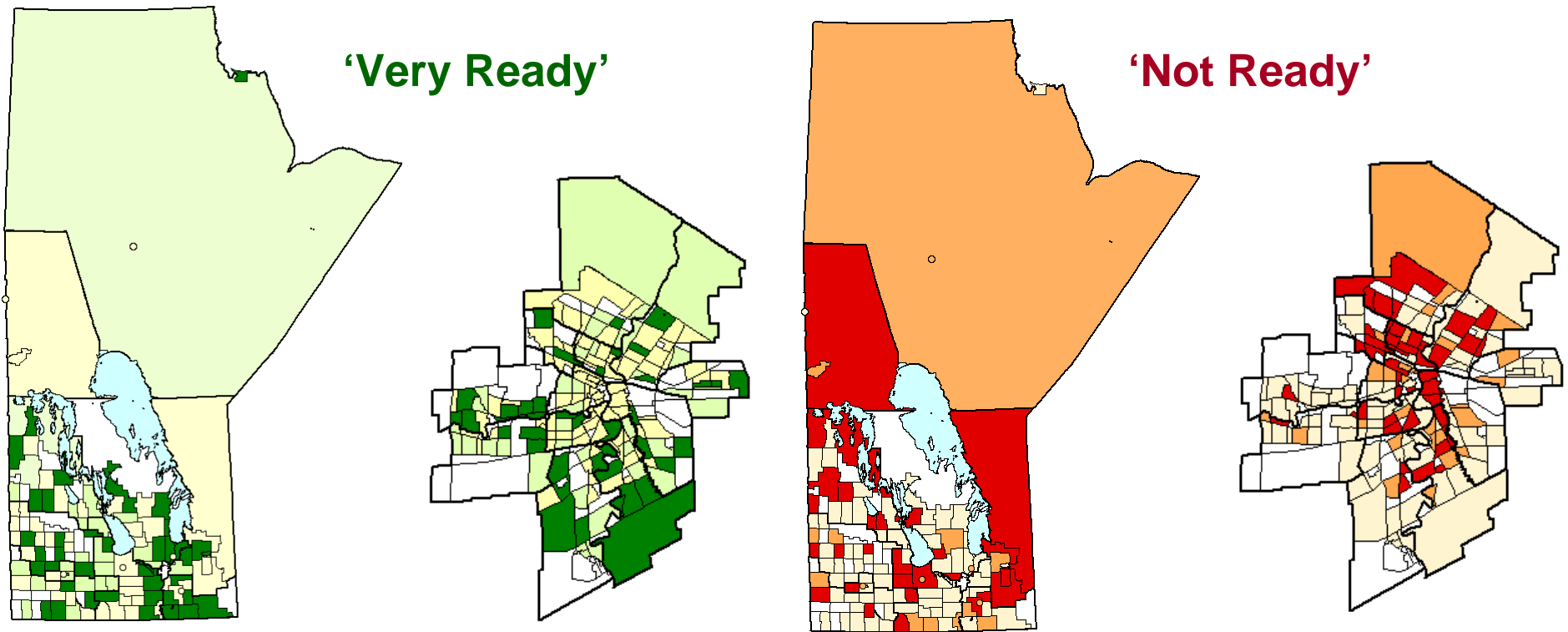
Research tells us that children who begin school ready to learn will have future successes in learning throughout their lives. So how do we help children get this best start to school? The answer is what societies have known for generations – it takes a village to raise a child.



# Knowledge Exchange



# Community-level EDI data is mapped using student's residential postal code



# From Data to Action in Manitoba

1) Winnipeg School Division

**The Elmwood Home Learning Assistance Program**

2) Central Region Parent Child Coalition

**The Kit & Kaboodle Program**

3) SPLASH Child Care

**The SPLASH Child Enrichment Centre**



WINNIPEG SCHOOL DIVISION  
INVESTING IN THE FUTURE





**WINNIPEG SCHOOL DIVISION**  
**INVESTING IN THE FUTURE**



**Manitoba** 

# School Division Innovations

**Manitoba's school divisions use EDI data to assist them in planning and implementing initiatives that prepare preschool children for successful school entry, through the Early Childhood Development Initiative (ECDI) supported by Manitoba Education. One example of how school divisions use the EDI comes from the Winnipeg School Division:**

**The Elmwood Home Learning Assistance Program**



WINNIPEG SCHOOL DIVISION  
INVESTING IN THE FUTURE

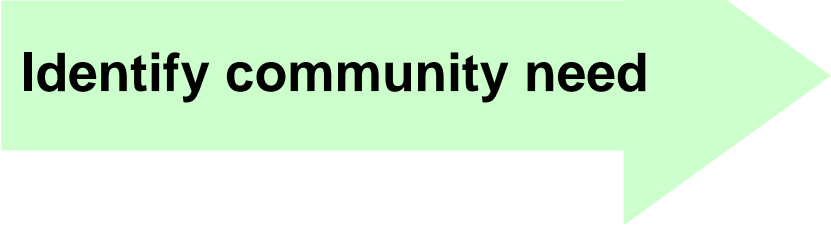



# The Elmwood Home Learning Assistance Program

The EHLAP was piloted in 2003. Each of the five schools was assigned a home learning assistant to work with families to provide:

- resources and strategies for enhancing development
- encourage family involvement in a child's learning
- establish a supportive, link between home and school





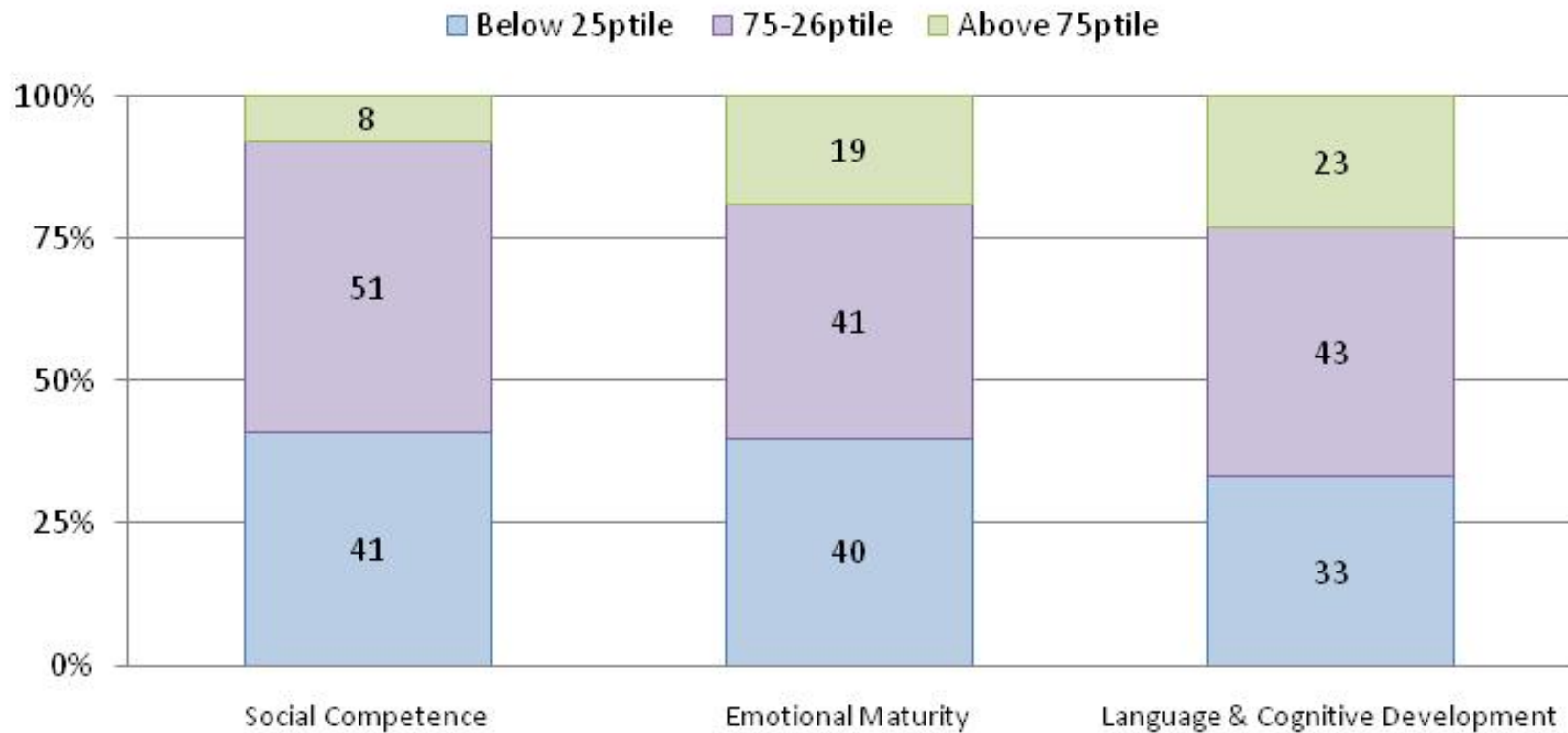
## Identify community need

**Several years of school and division-level EDI data, collected by the division since 1999/00, helped the Winnipeg School Division identify several at-risk schools with high needs within all developmental areas. Of particular concern was the significant number of vulnerable children in the five schools in the Elmwood community.**



**WINNIPEG SCHOOL DIVISION**  
INVESTING IN THE FUTURE

# EDI: Percent of children in the percentile ranges scale (Elmwood region)



*\*Based on 2002/2003 WSD EDI Results*



**WINNIPEG SCHOOL DIVISION**  
INVESTING IN THE FUTURE



## **Collaborate, Partner & Plan**

- **Concerned about non-readiness of early years children in the Elmwood region, principals of all five elementary schools in Elmwood met with their superintendent in 2003 to map out some counter-measures in facilitating positive changes.**
- **A decision was made to implement a program that provides an enriched educational environment for children in the nursery and kindergarten programs, and supports the children's parents in their involvement with their child's school program.**




**Implement Action!**

- **The outcome of our response was the inception of the Home Learning Assistance Program (HLA).**
- **The program is:**
  - **An early intervention approach**
  - **A non-intrusive outreach**
  - **Offered through the school community**
- **The HLA program works in tandem with Early Childhood Development Initiative Programs to reap synergistic results.**



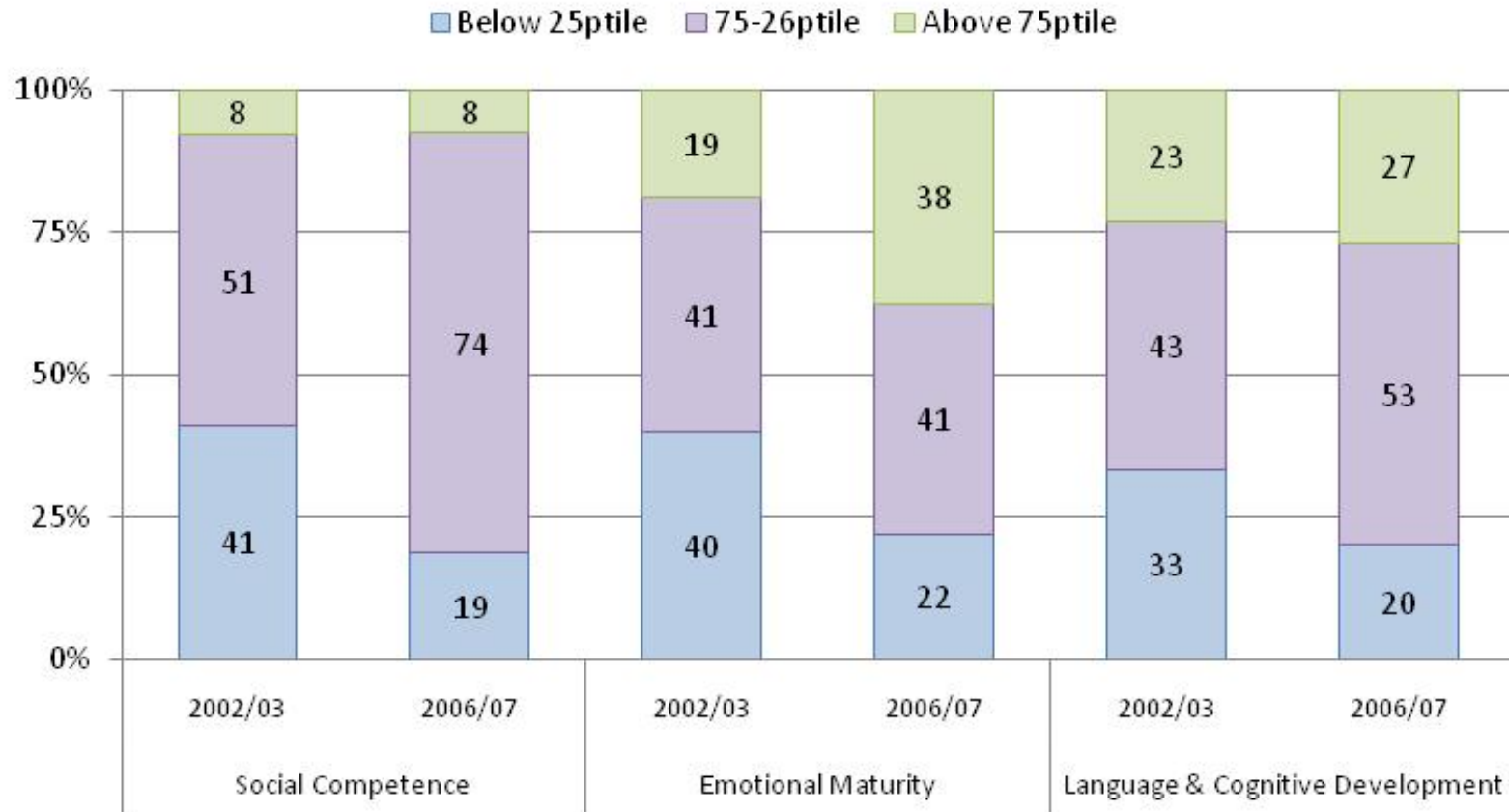
**WINNIPEG SCHOOL DIVISION**  
INVESTING IN THE FUTURE

# Home Learning Assistants (HLA)

- The HLA's roles and functions are as follows:
  - Home visits as a resource
  - Delivering early years literacy, numeracy, and health programs
  - Providing resources to parents in facilitating school readiness for children
  - Assisting early years teachers in the classroom with instructional groups in literacy, numeracy, and phonological awareness programs.



# EDI Comparison: Percent of children in the percentile ranges (Elmwood region)



*\*Based on 2002/2003 & 2006/2007 WSD EDI Results*



**WINNIPEG SCHOOL DIVISION**  
INVESTING IN THE FUTURE

***“The home visits have been very beneficial, not only in assisting and preparing young children for Grade 1, but in strengthening the relationship between families and their school community.”***

***Debbie Korne, home learning assistant***



**WINNIPEG SCHOOL DIVISION  
INVESTING IN THE FUTURE**



***“I appreciate our Home Learning Assistant because of the personal interest she takes in each child. My children look forward to her home visits. They love the one-on-one attention and the activities she plans. The evening workshops offer parents the opportunity to spend one-on-one time with their children, helping create special memories.”***

*Rhonda Banish, parent*



WINNIPEG SCHOOL DIVISION  
INVESTING IN THE FUTURE



Healthy Child Coalition - Central Region

# Parent Child Coalition Innovations

It takes a village to raise a child, and Manitoba's 26 parent-child coalitions connect parents and children to their community, schools, neighbours and support services. An example of how coalitions support parents and children comes from the Central region's parent child coalition:  
**The Kit & Kaboodle Program**



# The Kit & Kaboodle Program

**Kit & Kaboodle empowers communities and parent groups in setting up and running simple, fun-filled programs for preschool children and their parents/caregivers. The Central region coalition provides literacy program kits to their community partners. Their partners are encouraged to adapt these resources to better reflect their diversity and cultural backgrounds and develop their program schedules to meet their community's needs. Since Kit & Kaboodle started in 2006, there are over 60 trained facilitators, and the program is used in 27 communities.**



## Identify community need

At a local forum, stakeholders from across Manitoba's Central region came together to examine the strengths and needs of their region through a review of their mapped EDI data reports. Opportunities were then identified to address their region's needs in language and literacy.

*“Having so many of our community stakeholders together around one common table, helped plant the seeds for cultivating future partnerships and programming in early childhood development”*

**Tracy Bamford, coalition coordinator**



## Collaborate, Partner & Plan

Consultations took place with the parent-child program facilitators in the Central region. The framework for a literacy program emerged – one that would serve their economically and culturally diverse rural population. A partnership with the coalition, Manitoba Family Services and Housing, regional child care centres, and local libraries was established, and the Kit & Kaboodle program was born.



**Implement Action!**

***“The response from families has been universally positive. All participants from every walk of life have enjoyed the chance to meet with other parents and share a fun time with their children”.***

**Joan Stainton, program facilitator**



# splash CAREES!

Collaboration, Acceptance, Respect, Excellence, Safety

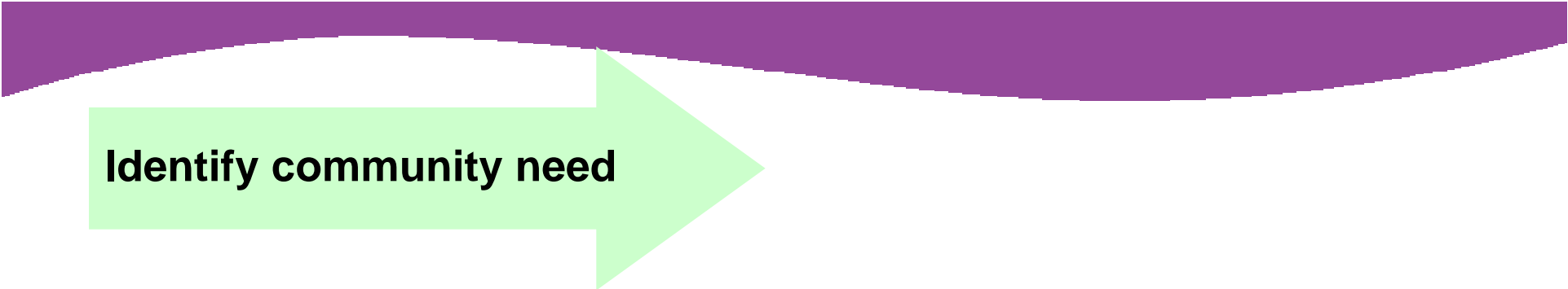


# Early Learning and Child Care Innovations

Many preschool children spend time in early childhood education. Early learning and care providers use EDI results to identify and support the strengths and needs of the children in their care. Child care experts across the province are using EDI results to guide program development. An example of this comes from SPLASH Child Care Inc. in Winnipeg's Point Douglas Community: **The SPLASH Child Enrichment Centre**

# The SPLASH Child Enrichment Centre

The SPLASH Child Enrichment Centre opened its doors in September 2009. The accessible location in the North End Wellness Centre will provide 48 new child care spaces for North End families. With a curriculum-based program designed around the developmental areas of the EDI, our goal is to give our children a love of learning and positive skills for future learning in school.



## Identify community need

After reviewing their mapped EDI data reports, the director and staff of the **SPLASH Child Care Inc.**, the community area child care coordinator and members of the community's parent-child coalition identified a need in language and literacy.

“As the child care co-ordinator for the Point Douglas community, I encouraged **SPLASH** to use their community EDI data to develop early learning programs relevant to the needs of children”.

**Brenda Wild, coordinator for the MB Child Care Program and chair of the Point Douglas Parent Child Coalition**



**Collaborate, Partner & Plan**

**A partnership was formed with SPLASH , MaMawi, YM/YWCA, and the Winnipeg Regional Health Authority, with support from the Manitoba Child Care Program. Their vision was to develop a new Child Enrichment Centre in Winnipeg's North End Point Douglas community.**



**Implement Action!**

*“We have enhanced our programming philosophy – learning through play – by threading a literacy and numeracy focus through everything we do – even in gym!”*

**Lesley Massey, director of SPLASH Child Care Inc. and the SPLASH Child Enrichment Centre**

## For further information contact:

- Kristine Vielfaure: 204-789-0439  
(kvielfaure@wsd1.org)  
Winnipeg School Division
- Tracy Krassman-Bamford: 204-242-4598  
Central Parent Child Coalition
- Lesley Massey: 204-582-3299 (splashcc@mts.net)  
SPLASH Child Enrichment Centre



WINNIPEG SCHOOL DIVISION  
INVESTING IN THE FUTURE

splash  
CARES!  
Collaboration, Acceptance, Respect, Excellence, Safety

